



AluK Building Systems Private Limited

Bagmane Laurel, "B" Block, 2nd Floor, Level 3
Bagmane Tech Park, CV Raman Nagar
Bangalore-560093, Karnataka, India

T: +91 80 3304 3304
E: info@aluk.in

aluk.in

ALUK[®]

SC40 / SC45



SLIDING DOOR SYSTEMS

ALUK[®]

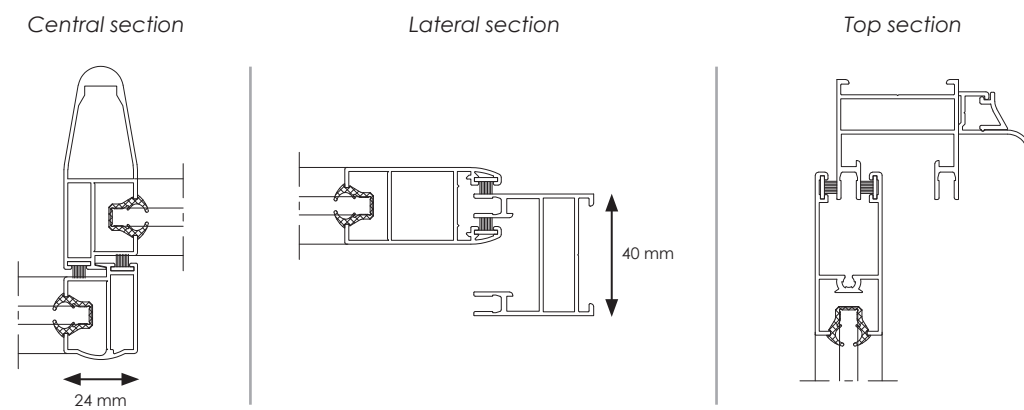
SC40 / SC45

➤ SC40: EFFICIENT AND ECONOMIC SLIDING SOLUTION

AluK SC40 is a slim, yet solid and durable high quality sliding window system which guarantees strength and durability in use. Tested for 25000 cycles of operation (equivalent to more than 15 years of regular use), the system provides an envying 80 to 120 kg of sash weight with single glazed system choice of 4 – 8 mm for mass housing requirement. SC40 gives comprehensive performance along with reinforced security and wider vision with great overall aesthetics.

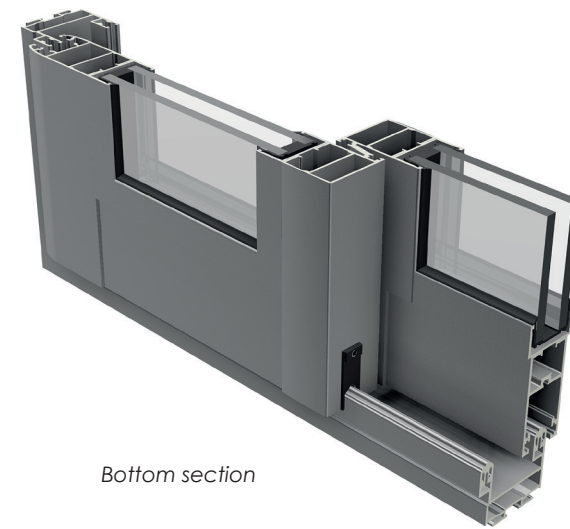


CAD Cross sections

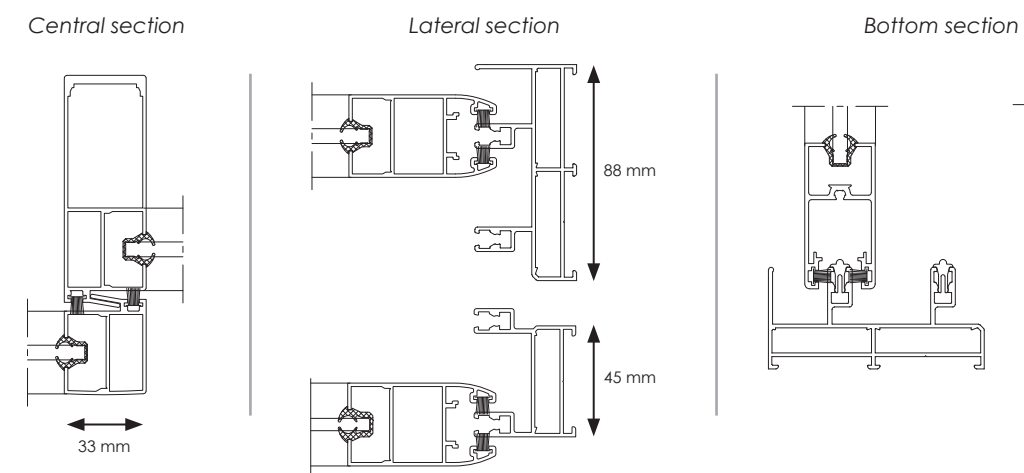


➤ SC45: SLIM, EFFICIENT AND ELEGANT SLIDING SOLUTION

SC45 is an outstanding competitive sliding system solution which benefits from the most innovative aesthetics and technical concepts making it a unique solution in its segment: slim outside strong inside. Especially designed for applications where quality finishing and safe operation matters the most. The SC45 sliding system, enables to achieve tall and stable windows with hurricane barriers and improved visibility.



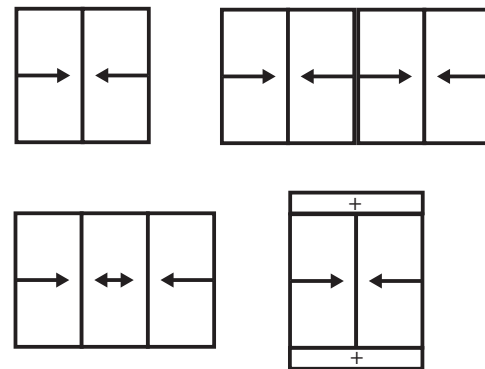
CAD Cross sections



Applications

A wide range of sliding option is available with choice of integrated fly screen. System applications include:

- 2 Track 2 sashes,
- 2 Track 3 sashes,
- 2 Track 4 sashes,
- 3 Track 3 sashes,
- 3 Track 6 sashes,
- 4 Track options (SC45 only),
- fixed or casement integration options.



High quality fittings & accessories

The system comes with high quality, AluK branded fittings and accessories:

- locks with or without key option for added security,
- microwave cured siliconized EPDM gasket,
- high quality rollers on needle bearings replaceable without dismantling the sashes,
- anodized aluminium rail on bottom track for smoother slider movement.



Performances

- Air: 3
- Water: 5A
- Wind: C5

Test based on a window of 2 track 2 sashes of 1530 mm width and 1480 mm height

Product Features

	SC40	SC45
Frame depth	40 mm (2 Track) 72 mm (3 Track)	52/88 mm (2 Track) 94/130 mm (3 Track) 136 mm (4 Track)
Sash width	51 mm	60 mm
Sash type	Overhanging	Overhanging or Pocket
Built-in extrusion handle	●	●
Frame and sash assembly	45° joint in frame and 90° joint in sash	45° joint in frame and 90° joint in sash
Central mullion width	24 mm	33 mm
Central mullion shapes	Aerodynamic or rectangular	Aerodynamic or rectangular
Roller capacity	80 - 120 kg	80 - 120 kg
Single point locking	●	●
Multipoint locking	●	●
Fly screen option	●	●
Architrave option	●	●
Central transom for fly screen sash	●	●
Mosquito shutter integration	●	●
Central transom option for glass sash	●	●
Door bottom kick plate	●	●
Casement compatibility	40N	45DS
Glazing	Single glazing only	Single & double glazing
Infill glass thickness	4/5/6/8 mm	4/5/6/8/24 mm

